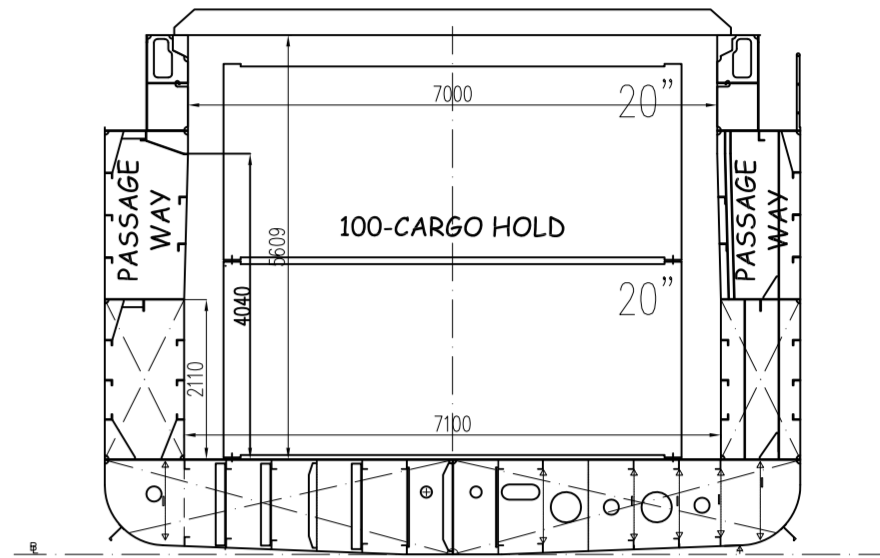
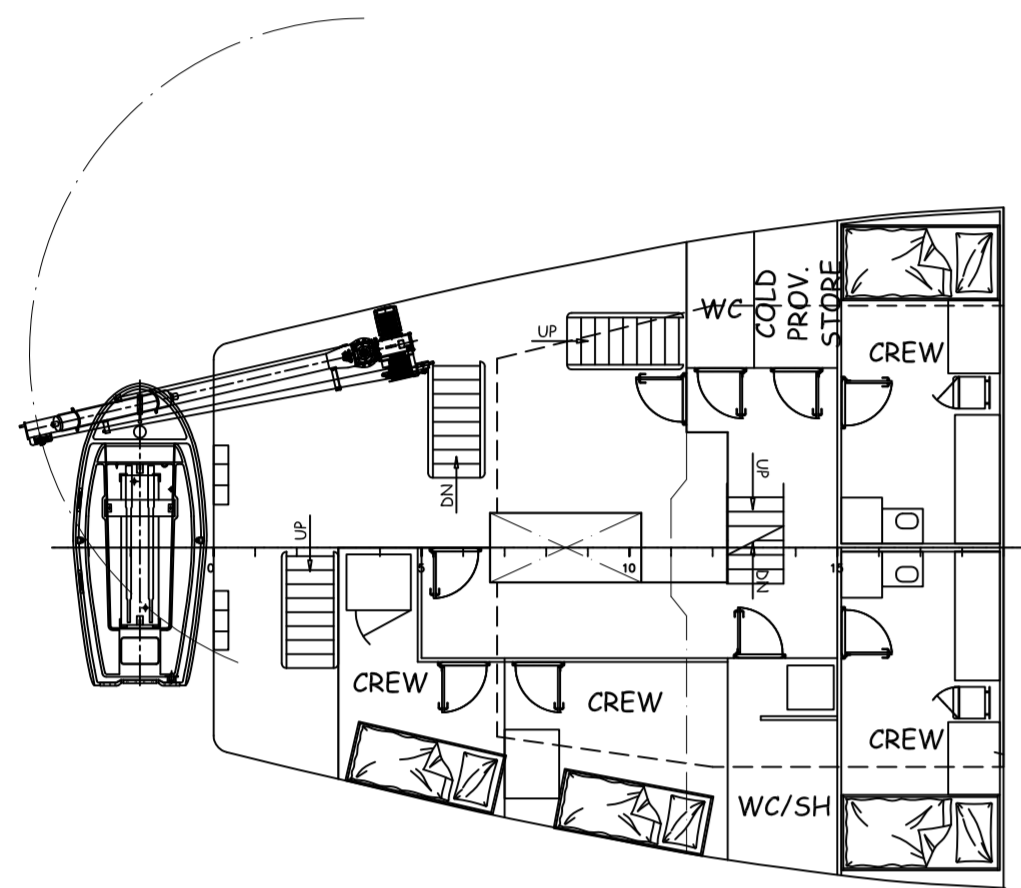


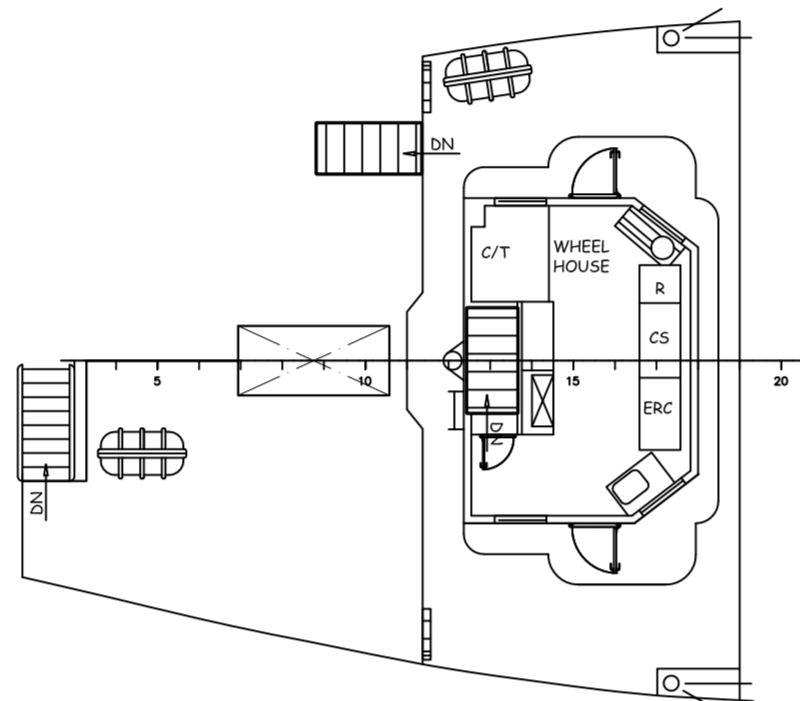
Profile View



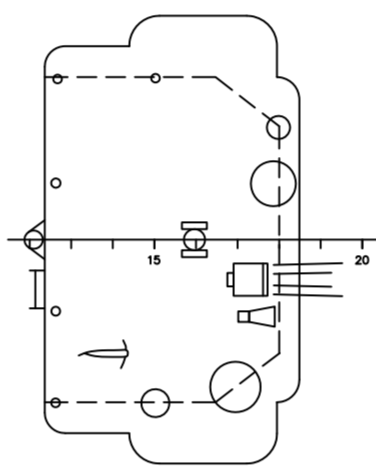
TYPICAL MIDSHIP SECTION



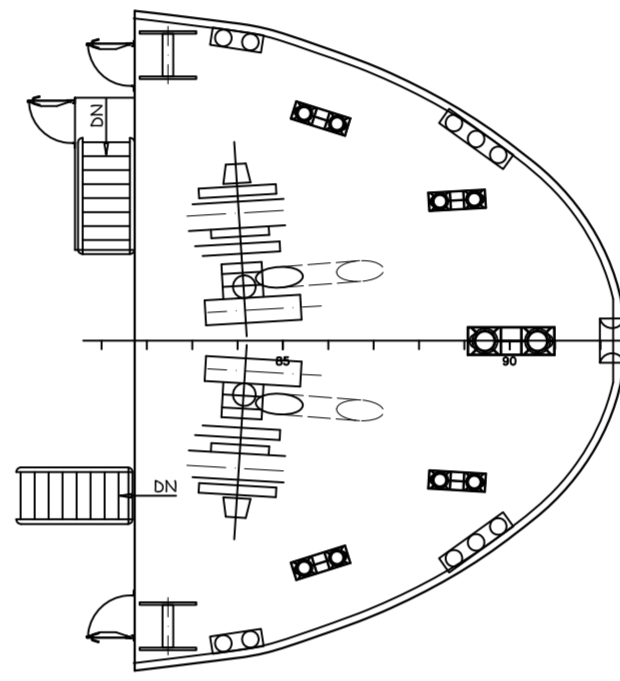
BOAT DECK



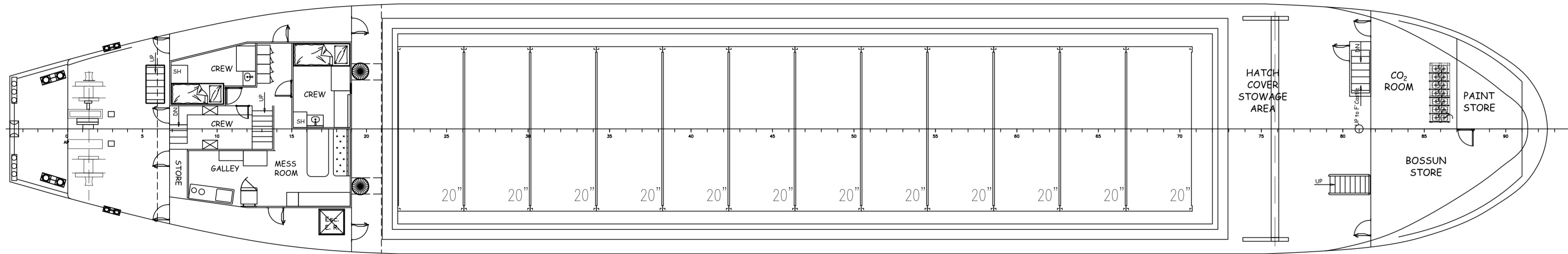
BRIDGE DECK



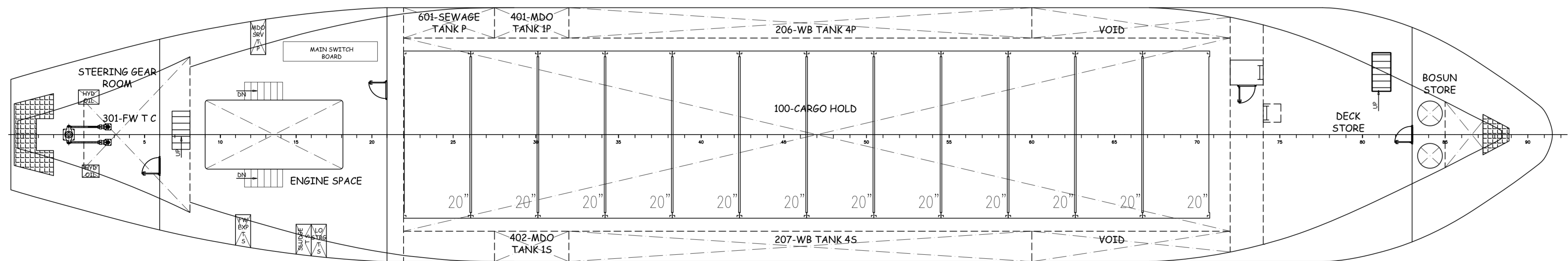
COMPASS DECK



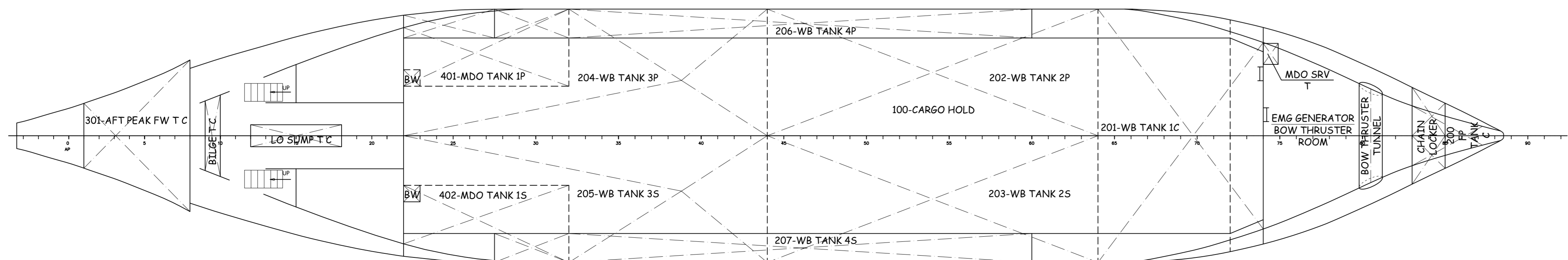
F' CASTLE DECK



MAIN DECK VIEW



TWEEN DECK



DOUBLE BOTTOM

PROVISIONALLY APPROVED

12/10/2022

TUZLA/TURKEY




MAIN DIMENSIONS

LENGTH OVER ALL	L <sub>OA</sub>	: 56.300 m
LENGTH	L <sub>BP</sub>	: 52.780 m
LENGTH	L <sub>WL</sub>	: 54.048 m
BREADTH	B	: 9.200 m
DEPTH	D	: 5.600 m
DRAUGHT	T <sub>S</sub>	: 4.901 m
Displacement		: 1863 t
Deadweight		: 1381 t

NO	DEĞİŞİKLİK/REVISION	TARİH/DATE	İMZA/SIGN
----	---------------------	------------	-----------

This design presented in this drawing is property of "CBY Engineering Supervision & Consultancy". It must not be handed over by third parties without the written permission of the company. Also, it must not be used for other purposes than specified in the contract even in modified form without the written permission.

 CBY Engineering Supervision & Consultancy		"EFE"	
DESIGNED BY 20.09.2022	OWNER EGE SHIPPING	TERSENE/SHIPYARD YOSHIDA	TEKNE/HULL NO 5111
CHECKED BY 20.09.2022	PROJ. NO 1024	EBAT/SIZE 841x1189	OLCEK/SCALE 1/100 (AO)
CLASS/CLASS OMCS	ISIM/TITLE GENERAL ARRANGEMENT PLAN		
REVISION/REVISION REV00			
RESİM NO/DRW. NO 101-001-000			